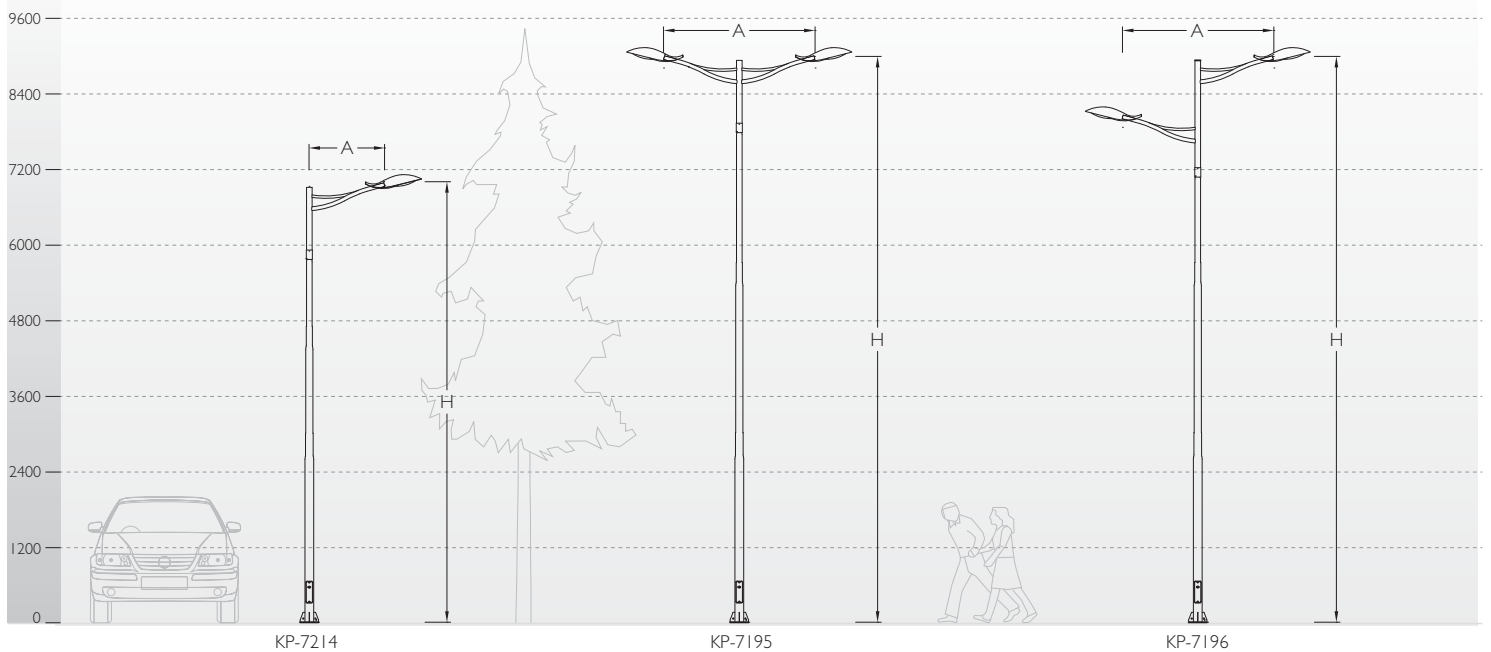




ID	Arms	A	H
KP-7212	Single Arm	1200	6000
KP-7213	Double Arm	2400	6000
KP-7214	Single Arm	1200	7000
KP-7215	Double Arm	2400	7000
KP-7194	Single Arm	1200	9000
KP-7195	Double Arm	2400	9000
KP-7196	Asy. Arm	2400	9000

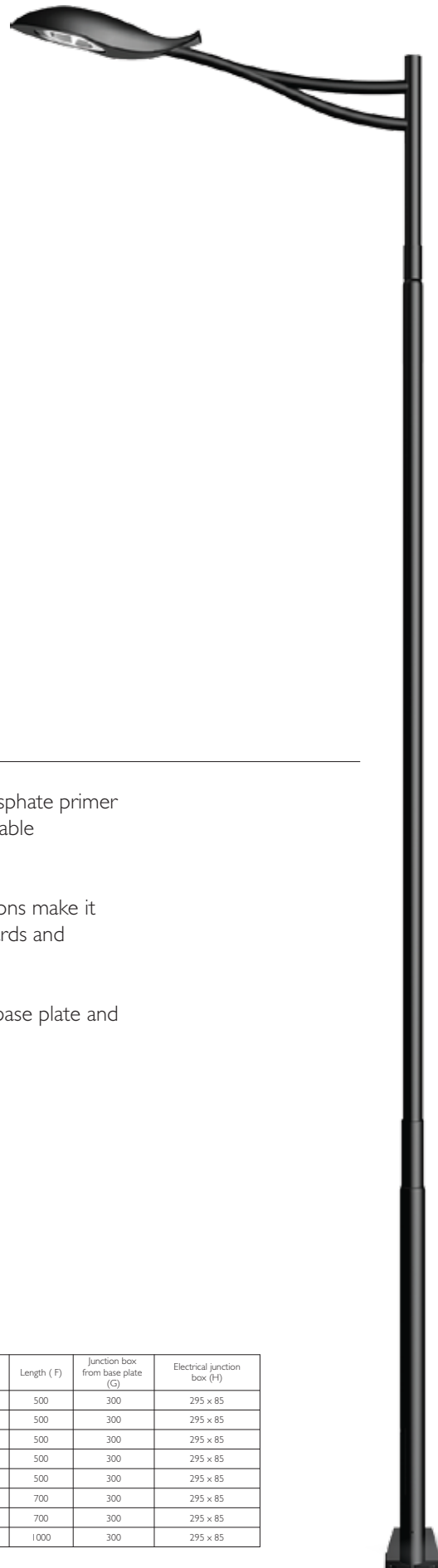
Swaged Pole



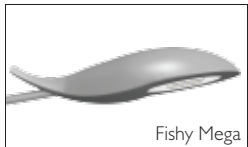
Fishy is marked by simplicity to display minimalist architecture. The design evokes the values of serenity and modernity of metal.

Features:

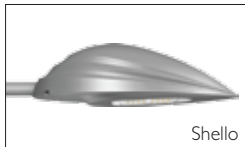
- Fishy pole with single / double / asymmetric arm is designed for street lighting, suitable for various street lighting luminaires.
- This architecturally designed pole is structurally sound. Pole design parameters vary depending on the type of bracket and loading factor.
- Pole sections are swaged and joint together using special v groove technique by certified welders using high end MIG welding processes.
- Built-in control box with cast aluminium service door and safety rope.
- The control gear tray is prewired with MCB, terminal connectors for loop-in loop-out arrangement.



Fixture Options



Fishy Mega



Shello

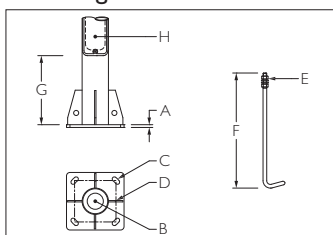


Finish : Coated with epoxy zinc phosphate primer and finished using environmentally stable polyurethane based paint.

Applications : Various luminaire options make it suitable to light roads, street, boulevards and public places.

Installation : Surface mounted with base plate and fitted on a pre formed foundation.

Mounting Details



Pole Height	Base plate (A)	Cable Entry Hole (B)	No.of holes/ bolts (C)	CC (D)	Bolt (E)	Length (F)	Junction box from base plate (G)	Electrical junction box (H)
5000	□250 x 12thk	∅70	4	180	M16	500	300	295 x 85
6000	□250 x 12thk	∅70	4	180	M16	500	300	295 x 85
7000	□300 x 16thk	∅70	4	215	M20	500	300	295 x 85
8000	□300 x 16thk	∅70	4	215	M20	500	300	295 x 85
9000	□300 x 16thk	∅70	4	215	M20	500	300	295 x 85
10000	□400 x 16thk	∅125	4	300	M20	700	300	295 x 85
11000	□400 x 16thk	∅125	4	300	M20	700	300	295 x 85
12000	□400 x 16thk	∅125	4	300	M24	1000	300	295 x 85

Note : All dimensions are in mm