

Quadra Lighting Poles

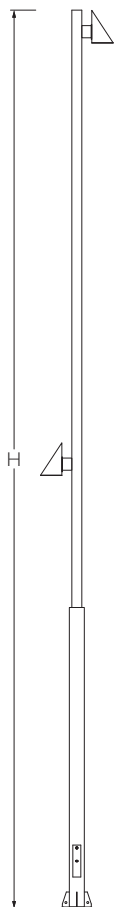
K-LITE



Quadra is a contemporary design with minimalist construction. Compact without visible mounting equipment and optimised integration, Quadra is in perfect continuity with the geometric lines of the square column. These assemblies are ideal for surroundings of contemporary architectural constructions.

Features :

- Quadra pole is suitable for various pole top & street Light luminaires.
- This architecturally designed pole is structurally sound.
- Pole section welded to base plate by certified welders using high end MIG welding processes.
- Built-in control box with service door including lock and safety chain.
- The control gear tray is prewired with MCB, terminal connectors for loop-in loop-out arrangement.
- CE - Conformity mark



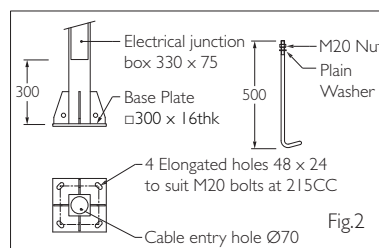
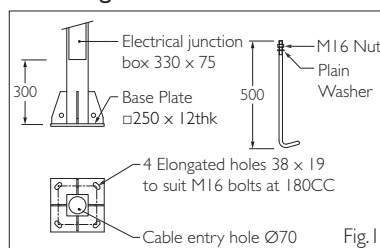
ID	Arm	H	Mounting
KP-8178	Single Arm	6000	Fig.1
KP-8179	Double Arm	6000	Fig.1
KP-8174	Single Arm	9000	Fig.2
KP-8175	Double Arm	9000	Fig.2
KP-8176	Asy. Arm	9000	Fig.2

Finish : Coated with epoxy zinc phosphate primer and finished using environmentally stable polyurethane based paint.

Applications : Various luminaire options make it suitable for main / secondary roads, streets, boulevards and public places.

Installation : Surface mounted with base plate and fitted on a pre formed foundation.

Mounting Details



Note : All dimensions are in mm