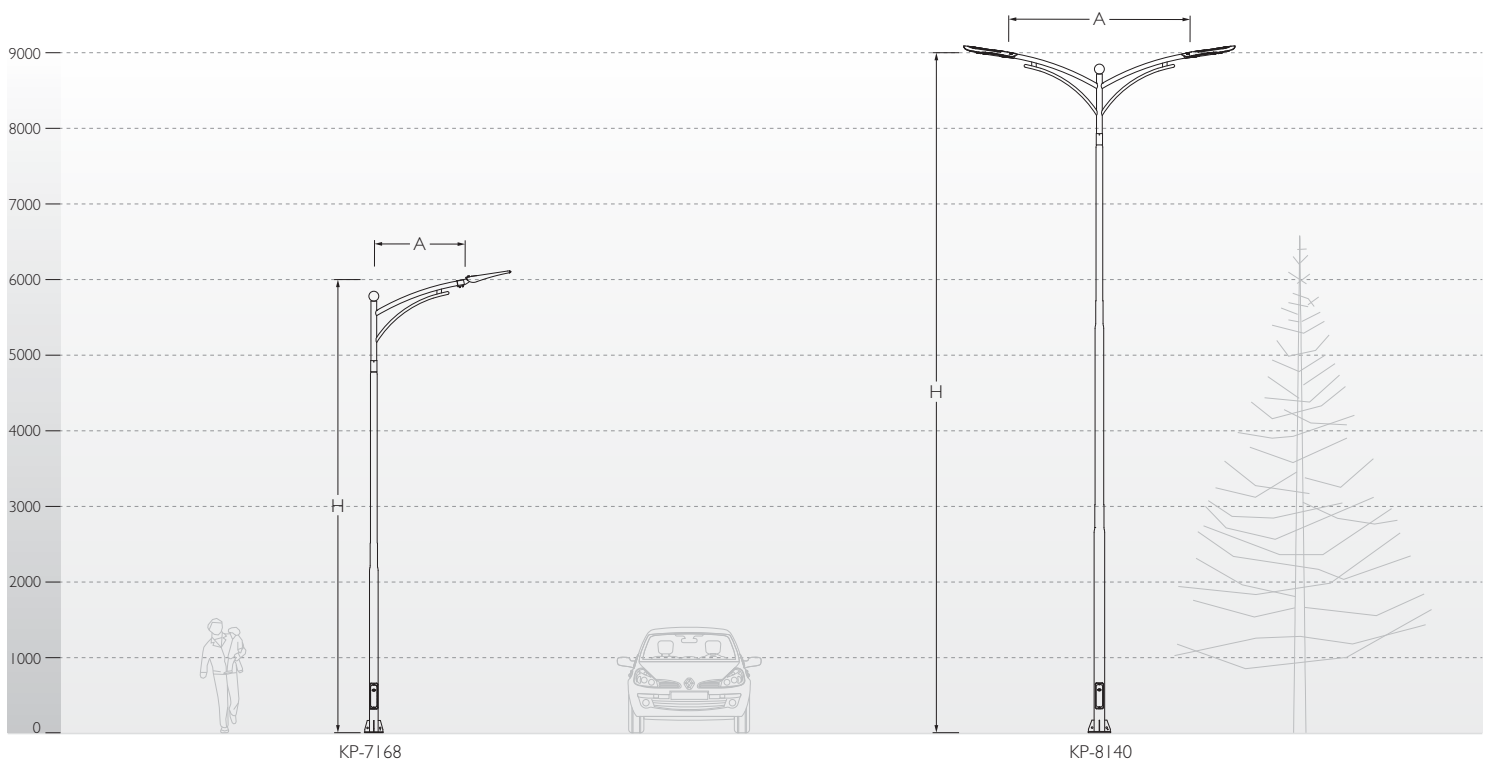




Bangalore International Airport Road

| ID | Arms | A | H |
|---------|------------|------|------|
| KP-7168 | Single Arm | 1200 | 6000 |
| KP-7169 | Double Arm | 2400 | 6000 |
| KP-8139 | Single Arm | 1200 | 9000 |
| KP-8140 | Double Arm | 2400 | 9000 |

Swaged Pole

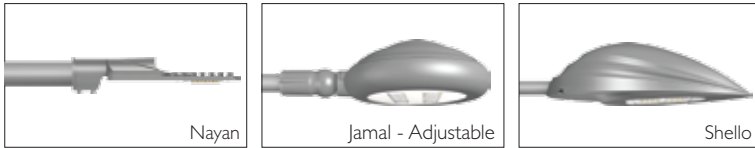


American is an architecturally designed solution which is discreetly fused with modernity. It is a overall lighting solution for both classic and contemporary urban settings.

Features:

- American pole with single / double arm is designed for street lighting, suitable for various street light luminaires.
- This architecturally designed pole is structurally sound. Pole design parameters vary depending on the type of bracket and loading factor.
- Pole sections are swaged and joint together using special v groove technique by certified welders using high end MIG welding processes.
- Built-in control box with cast aluminium service door and safety rope.
- The control gear tray is prewired with MCB, terminal connectors for loop-in loop-out arrangement.
- **CE** - Conformity mark

Fixture Options

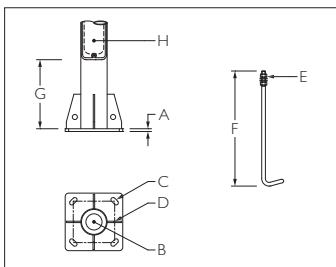


Finish : Coated with epoxy zinc phosphate primer and finished using environmentally stable polyurethane based paint.

Applications : Various luminaire options make it suitable for main road / secondary roads, street, resorts, boulevards and public places.

Installation : Surface mounted with base plate and fitted on a pre formed foundation.

Mounting Details



| Pole Height | Base plate (A) | Cable Entry Hole (B) | No.of holes/ bolts (C) | CC (D) | Bolt (E) | Length (F) | Junction box from base plate (G) | Electrical junction box (H) |
|-------------|----------------|----------------------|------------------------|--------|----------|--------------|----------------------------------|-----------------------------|
| 5000 | □250 x 12thk | Ø70 | 4 | 180 | M16 | 500 | 300 | 295 x 85 |
| 6000 | □250 x 12thk | Ø70 | 4 | 180 | M16 | 500 | 300 | 295 x 85 |
| 7000 | □300 x 16thk | Ø70 | 4 | 215 | M20 | 500 | 300 | 295 x 85 |
| 8000 | □300 x 16thk | Ø70 | 4 | 215 | M20 | 500 | 300 | 295 x 85 |
| 9000 | □300 x 16thk | Ø70 | 4 | 215 | M20 | 500 | 300 | 295 x 85 |
| 10000 | □400 x 16thk | Ø125 | 4 | 300 | M20 | 700 | 300 | 295 x 85 |
| 11000 | □400 x 16thk | Ø125 | 4 | 300 | M20 | 700 | 300 | 295 x 85 |
| 12000 | □400 x 16thk | Ø125 | 4 | 300 | M24 | 1000 | 300 | 295 x 85 |

