

# Jado Bollard



A decorative LED bollards designed to provide soft, uniform light. These luminaires offer shielded glare free illumination of ground surface and are perfect for illuminating entrances, footpaths as well as garden and landscape architecture. Clean Lines and pure form are the underlying elements of this series of LED bollards.

## Technical Specifications

- Luminaire body made of rectangular extruded aluminium tube with top SS sheet and non corrosive SS fasteners.
- For optimum coordination with lighting situation, these luminaires can be supplied in three different mounting heights.
- Non yellowing UV stabilized translucent polycarbonate diffuser.
- Silicone gasket.
- GI mounting plate with an anchorage unit made out of hot dip galvanised steel for extra guarantee against corrosion.
- Cable entries for through-wiring of mains supply cable.
- Integral power supply
- Earth connection
- Safety class I
- Prewired with LED driver and Suitable for operation on 240V, 50Hz single phase ac supply.

## Product Benefits

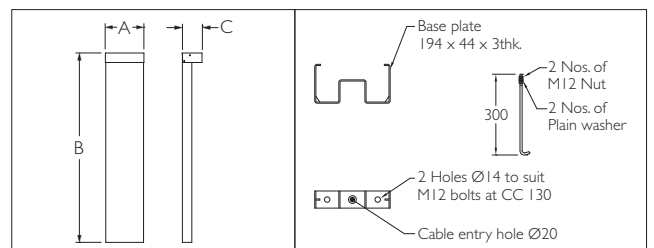
- High luminous efficiency at reduced wattage.
- Elegant, Robust design
- Quick installation and low assembly costs.
- Dark sky compliant protects pedestrians from glare, in addition to preventing spill light above the horizontal plane.
- Sustainable LED technology offers durability and optimal light output with low power consumption.

## Area of Application

Suitable for Private & Public areas, Illuminating Driveways, Pathways, Flowerbeds, Shopping areas, Entrances, Squares & Gardens.

## Available Finish

Pure polyester powder coated Graphite grey / Black.



ID	Wattage	A	B	C
7078	12W LED	200	1000	110
7100	12W LED	200	600	110
7200	12W LED	200	300	110



The luminous flux and the connected wattage quoted might change as a result of technical progress. For the latest technical information, Installation guidelines and product updates with LED technology please refer to the website at [www.klite.in](http://www.klite.in)



**Important Note :** To ensure proper installation, kindly translate / communicate the installation instructions to a qualified electrician in their respective local language.