



Trisha LED Spot Light



Trisha Series

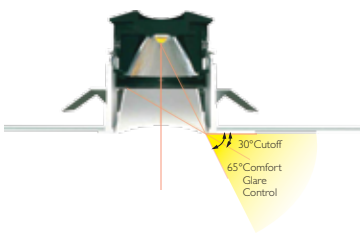


- Trisha LED slim down lighter is the perfect fit for all indoor lighting applications.
- The housing is constructed from die-cast aluminium for better thermal management finished with white epoxy polyester powder coating.
- Interchangeable LED optics
- Die-casted aluminium trim ring with elegant appearance and varied finished
- Suitable for operation on 240V, 50Hz single phase ac supply.
- Available CCT WW : Warm White (2700K), CW : Cool White (6000K), NW : Neutral White (4000K).

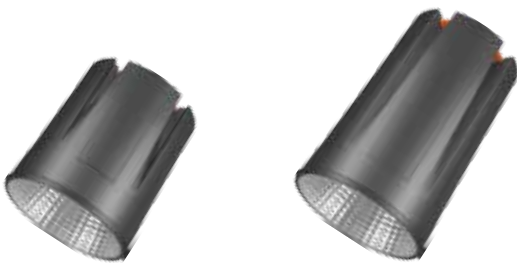
Note : Luminaire housing to be ordered with required LED Module / GU10 Holder.

Area of Application

Lobbies & Foyers, Retail Sector, Corporate Office, Residential & Educational premises, Commercial & Business Centers, Hospitality Industry



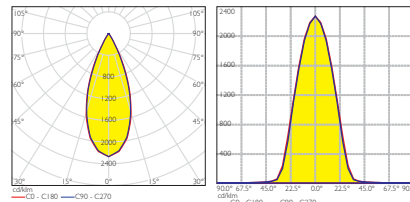
High quality optics / trims / trimless for fixed / adjustable with varied beam angle & wattage options



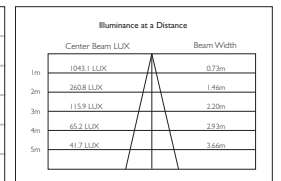
ID	Wattage	CRI	Dimension
8177	7W LED	>90	Ø50 x 59
8178	12W LED	>90	Ø50 x 81
8241	GU10 Holder	-	--



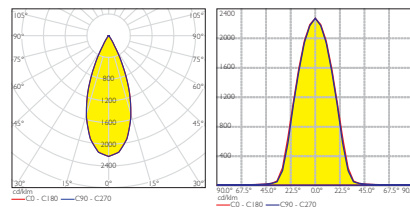
KL-8177 7W LED Module



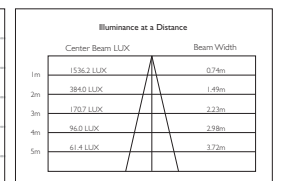
Lux Distance Curve

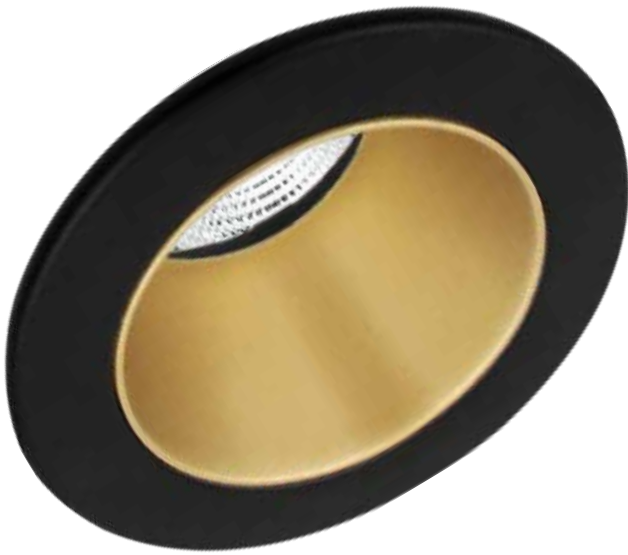


KL-8178 12W LED Module



Lux Distance Curve



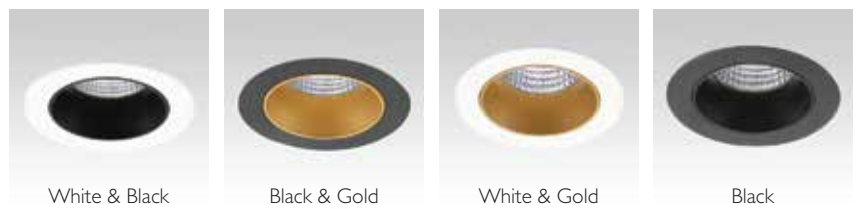


Trisha - Round Fixed



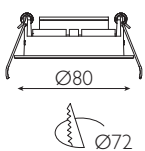
Trisha - Round Adjustable

Optional Colours



TRISHA ROUND FIXED 

ID : 7083



TRISHA ROUND ADJ 

ID : 7081

