

# Wall Cylin Mini



Facade luminaires downwards for general lighting and upwards for accent lighting of facades, precise lighting exactly where it is required. Aesthetically shaped wall mounted luminaire with fully shielded light source for up / down lighting effects.

## Technical Specifications

- Luminaire made of extruded aluminium hollow circular tube with die cast aluminium frame on bottom and top side is completely covered with die cast aluminium cap.
- Toughened clear glass diffuser.
- Silicon gasket.
- Cast aluminium base for mounting onto the wall.
- Surface mounting on wall using hardware after connecting to the power supply.
- Cable entries for through-wiring of mains supply cable.
- Integral power supply
- Earth connection
- Safety class I
- Protection class IP 65
- **CE** - Conformity mark
- Prewired with LED driver and suitable for operation on 240V, 50Hz single phase ac supply.

## Product Benefits

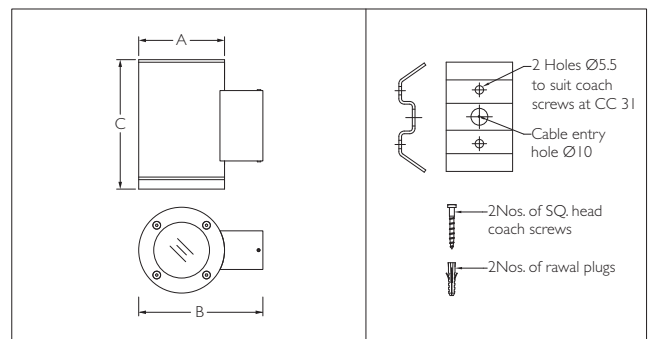
- High luminous efficiency at reduced wattage.
- Elegant, Robust design
- Quick & simple installation.
- Clear glass in the front with continuous rubber gasket to ensure adequate sealing against ingress of moisture, dust, insects etc.,

## Area of Application

Residential, Building facade, commercial centres, Passages, Walkways, Structures and Landscape lighting.

## Available Finish

Pure polyester powder coated Graphite grey.



ID	Wattage	A	B	C
7897	6W LED	Ø100	145	150

The luminous flux and the connected wattage quoted might change as a result of technical progress. For the latest technical information, Installation guidelines and product updates with LED service life please refer to the website at [www.klite.in](http://www.klite.in)



**Important Note :** To ensure proper installation, kindly translate / communicate the installation instructions to a qualified electrician in their respective local language.