

- Trisha LED slim down lighter is the perfect fit for all indoor lighting applications.
- The housing is constructed from die-cast aluminium for better thermal management finished with white epoxy polyester powder coating.
- Interchangeable LED optics
- Die-casted aluminium trim ring with elegant appearance and varied finished
- Suitable for operation on 240V, 50Hz single phase ac supply.
- Available CCT WW : Warm White (3000K), CW : Cool White (6000K), NW : Neutral White (4000K).

Note : Luminaire housing to be ordered with required LED Module.



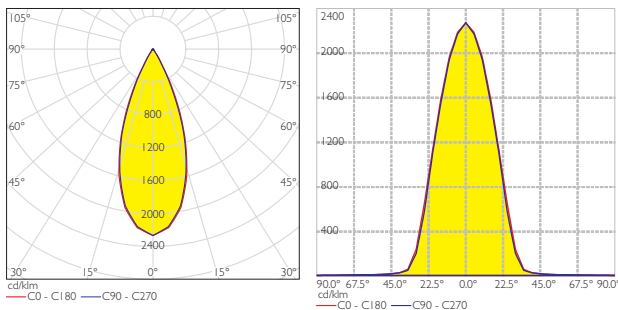
Area of Application

Lobbies & Foyers, Retail Sector, Corporate Office, Residential & Educational premises, Commercial & Business Centers, Hospitality Industry

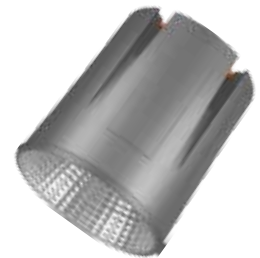
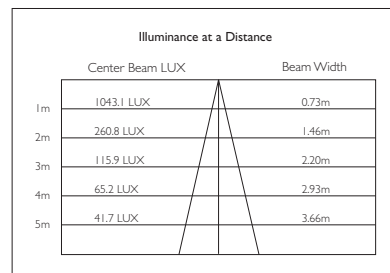


ID	Wattage
8177	7W LED
8178	12W LED

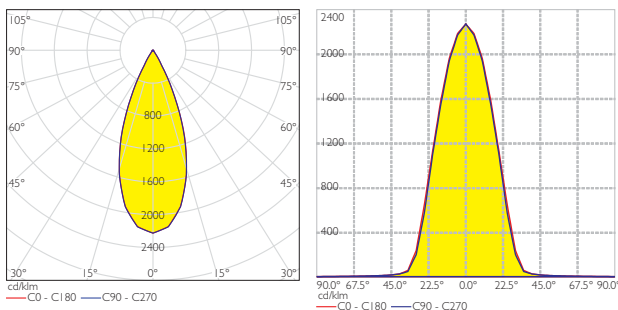
KL-8177 7W LED Module



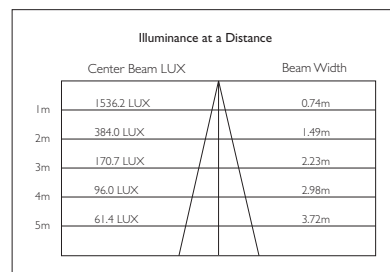
Lux Distance Curve



KL-8178 12W LED Module



Lux Distance Curve



Trisha - Deep

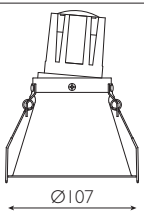


LED DOWN LIGHTERS

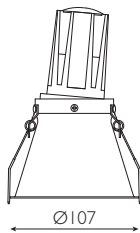
Optional Colours



ID	Colour
7674	White / Black
7675	Gold / Copper



7W  Ø99



12W  Ø99