



Linear Profile

"LED Linear Lighting" recess mounted, energy efficient LED luminaire, tailored to suit false ceiling is a slim and elegantly designed fixture, ideally suited for office and software industry applications offers a uniform, glareless, cool white and soft lighting in the workspace.

Technical Specifications

- Luminaire made of extruded aluminium for better thermal management.
- UV stabilized translucent diffuser for excellent diffused lighting experience throughout the life of the fixture.
- Designed for mounting on false ceiling.
- Cable entries for through-wiring of mains supply cable.
- Protection class IP20
- To be used with LED strip & power supply unit of suitable rating.

Product Benefits

- Attractive high quality housing.
- Sturdy construction in order to maintain performance of the luminaire and to reduce maintenance costs.
- Quick & simple installation.
- Flexible deployment options with a wide spectrum of applications.

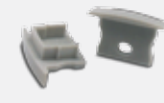
Area of Application

Corporate Offices, Malls, Restaurants, Receptions, Corridors, Commercial & Business Centers.

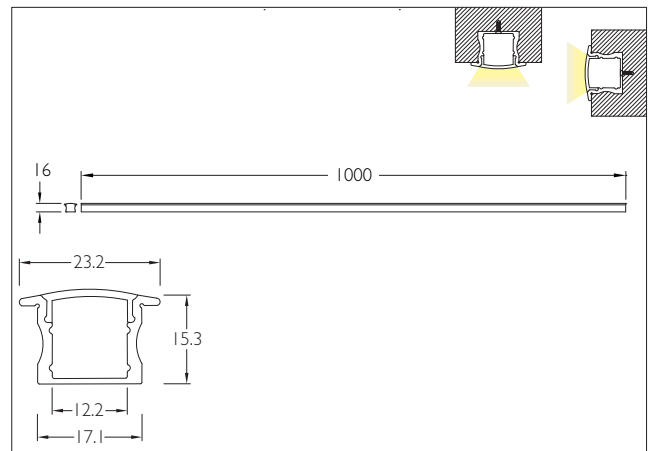
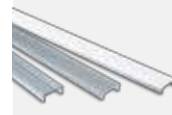


LED LINEAR LIGHTING

End Cap With Hole / Without Hole



Matte / Clear Diffuser



ID

3083

1m Aluminium Profile with PMMA Opal Matte / PC SemiClear Matte / PC Clear Diffuser, 2nos of End Caps

Standard length available in 1 & 2.5 metres

For the latest technical information, Installation guidelines and product updates please refer to the website at www.klite.in



Important Note : To ensure proper installation, kindly translate / communicate the installation instructions to a qualified electrician in their respective local language.