

Causeway



Decorative ornamental bollard suitable for classical architecture, varied fixture options create distinctive lighting while providing great stability and unlimited durability. These luminaires offer shielded glare free illumination of ground surface and are perfect for illuminating entrances, footpaths as well as garden and landscape architecture.

Technical Specifications

- Luminaire made of extruded aluminium alloy (grade 6063) with die-cast aluminium components and non corrosive SS fasteners
- Non yellowing UV stabilized translucent polycarbonate diffuser
- Silicon gasket
- GI mounting plate with an anchorage unit made out of hot dip galvanised steel for extra guarantee against corrosion. Luminaire can be aligned on the mounting plate around 360°.
- Cable entries for through-wiring of mains supply cable.
- Safety class II
- Protection class IP 54
- CE - Conformity mark
- Prewired with E27 holder and suitable for operation on 240V, 50Hz single phase ac supply.

Product Benefits

- Varied fixture options.
- Distinctive with unlimited durability.
- Decorative design for classical architecture.

Area of Application

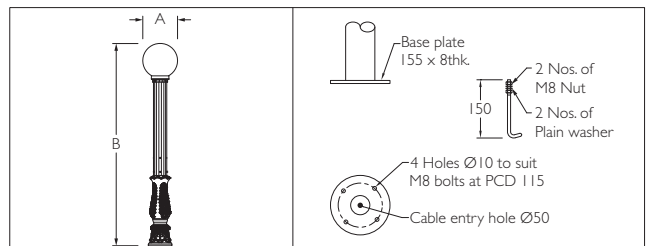
Suitable for Residential & Public areas for Illuminating Driveways, Pathways, Flowerbeds, Entrances, Squares, Gardens and as well as landscape architecture.

Available Finish

Pure polyester powder coated Graphite grey / Black.



TUBE BOLLARDS



ID	Holder	A	B
5455	E27	Ø250	1455

Max. Wattage : 13W LED / 20W CFLE

For the latest technical information, Installation guidelines and product updates please refer to the website at www.klite.in



Important Note : To ensure proper installation, kindly translate / communicate the installation instructions to a qualified electrician in their respective local language.