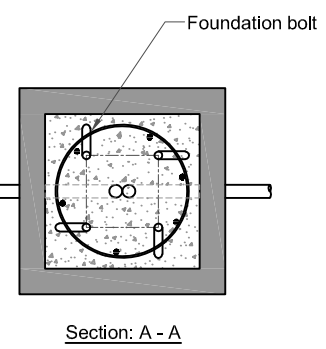


FOUNDATION TYPE	HEIGHT	DIMENSION " X "
A	6'	250
B	8' - 10'	500
C	12' - 14'	600



Note :

- Typical foundation drawing suitable for standard soil condition.
- Parameters considered in RCC foundation design :
 - Load bearing capacity of soil (LBC) : 10 Mt/m² (Minimum)
 - Basic wind speed : 50 m/s
 - Grade of steel reinforcement : Fe 415
 - Grade of foundation bolt : 4.6
- Height of foundation above ground level (150mm) may be revised to suit the site conditions especially considering the expected water level stagnation.
- Template supplied is suggested to be used for locating the CC of foundation bolts.
- 4 Nos. of foundation bolt have to be oriented (located), while casting the foundation such that the door of the electrical junction box faces the required direction.
- PVC / GI pipe for entry of supply cable and the materials required for foundation are not scope of our supply.

REV. No.	REVISION DETAILS	DATE	REVISED	CHD	APPD

DRAWN BASKAR	CHECKED	APPROVED	DATE 16-05-18	SCALE 1:15	MATERIAL -	Z:\KP\005.FOUNDATION DETAILS\KP - DFD - 090\REV 00.dwg				
<p>K-LITE INDUSTRIES CHENNAI - 600 098</p>						<p>DETAILED FOUNDATION DRAWING FOR KP - 49 □200 x 12 (FOUNDATION BOLT M16 x 300)</p>				
								DRG. NO. KP-DFD-090	REV 00	SHEET 1 of 1