

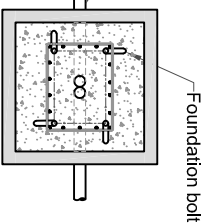
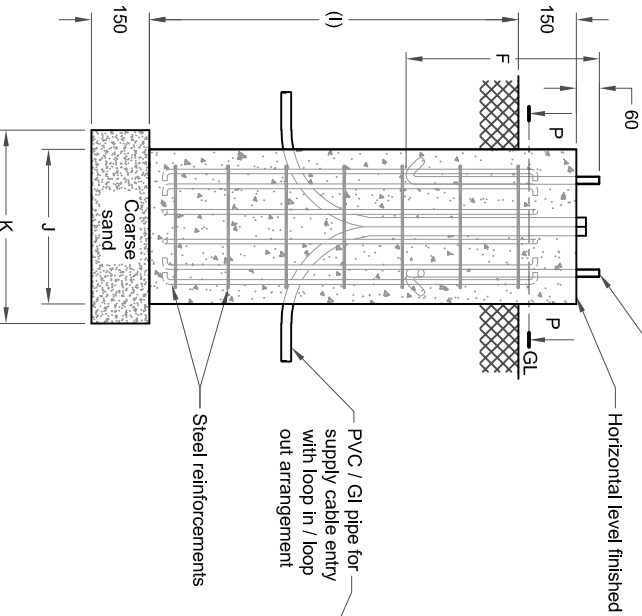
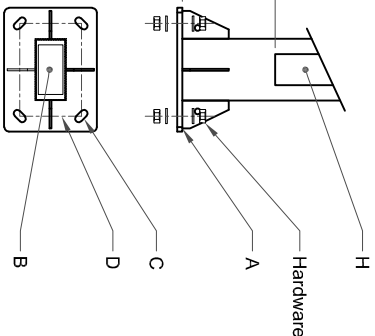
ALL DIMENSIONS ARE IN MM

K - LITE STANDARD (S1) POLE FOUNDATION DETAILS

Pole Height	Base plate (A)	Cable entry Hole(B)	No.of holes/ bolts (C)	CC (D)	Bolt (E)	Length (F)	Junction box from base plate (G)	Electrical junction box (H)	RCC Height below GL / Digging depth(I)	Length of RCC layer (J)	Length of coarse sand layer (K)
6000	400 x 300 x 16thk	160 x 80	4	300 x 200	M20	500	300	320 x 80	900	□500	□600
7000	400 x 300 x 16thk	160 x 80	4	300 x 200	M20	500	300	320 x 80	1000	□500	□600
8000	400 x 300 x 16thk	160 x 80	4	300 x 200	M20	500	300	320 x 80	1200	□500	□600
9000	400 x 300 x 16thk	160 x 80	4	300 x 200	M20	500	300	320 x 80	1200	□500	□600

Note:

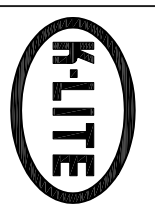
1. Typical foundation drawing for standard soil condition.
2. Parameters considered in RCC foundation design :
 Load bearing capacity of soil (LBC) : 10 Mt/m² (Minimum)
 Basic wind speed : 50 m/s
 Grade of steel reinforcement : Fe 415
 Grade of foundation bolt : 4.6
3. Height of foundation above ground level (150mm) may be revised to suit the site conditions especially considering the expected water level stagnation.
4. Template supplied is suggested to be used for locating the CC of foundation bolts.
5. 4 Nos. of foundation bolt have to be oriented (located), while casting the foundation such that the door of the electrical junction box face the required direction.
6. PVC / GI pipe for entry of supply cable and the materials required for foundation are not scope of our supply.



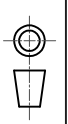
REV. No.	REVISION DETAILS	DATE	REVISED	CHD	APPD
01.	DOOR SIZE REVISED	09-07-18	BASKAR		

DETAILED FOUNDATION DRAWING FOR KP - 58
 SURFACE MOUNTED SQUARE POLE

Z:\KIP005.FOUNDATION DETAILS\KP - DFD - 084\REV 01.dwg



K-LITE INDUSTRIES
 CHENNAI - 600 098



DRG. NO. KP-DFD-084

REV 01 SHEET 1 of 1