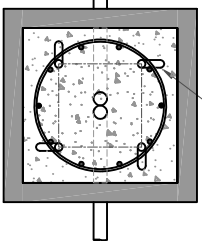
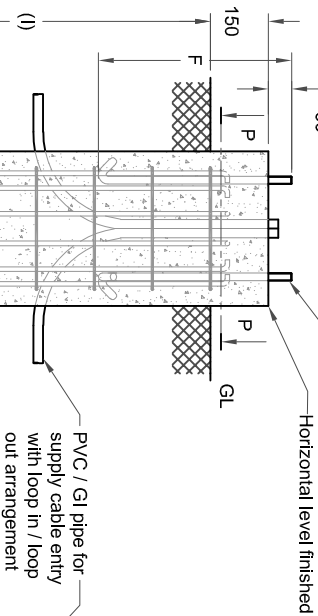


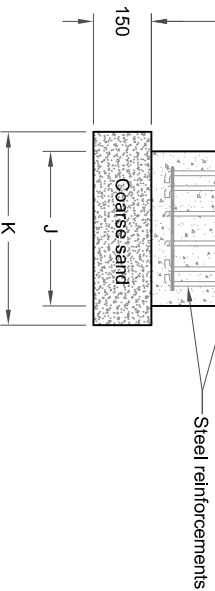
| STANDARD CONICAL POLE BASE PLATE DETAILS |                |                     |                         |        |          |            |                                  |                             |  |                         |                                 |
|--|----------------|---------------------|-------------------------|--------|----------|------------|----------------------------------|-----------------------------|--|-------------------------|---------------------------------|
| Pole Height                              | Base plate (A) | Cable entry Hole(B) | No. of holes/ bolts (C) | CC (D) | Bolt (E) | Length (F) | Junction box from base plate (G) | Electrical Junction box (H) | RCC Height below GL / Digging depth(I) | Length of RCC layer (J) | Length of coarse sand layer (K) |
| 6m                                       | □250 x 12hk    | Ø70                 | 4                       | 180    | M16      | 500        | 300                              | 295 x 85                    | 1000                                   | □400                    | □500                            |
| 7m                                       | □250 x 12hk    | Ø70                 | 4                       | 180    | M16      | 500        | 300                              | 295 x 85                    | 1000                                   | □400                    | □500                            |
| 8m                                       | □300 x 16hk    | Ø125                | 4                       | 215    | M20      | 500        | 300                              | 295 x 85                    | 1200                                   | □400                    | □500                            |
| 9m                                       | □300 x 16hk    | Ø125                | 4                       | 215    | M20      | 500        | 300                              | 295 x 85                    | 1200                                   | □400                    | □500                            |
| 10m                                      | □400 x 16hk    | Ø125                | 4                       | 300    | M20      | 700        | 300                              | 340 x 100                   | 1500                                   | □500                    | □600                            |
| 11m                                      | □400 x 16hk    | Ø125                | 4                       | 300    | M20      | 700        | 300                              | 340 x 100                   | 1800                                   | □500                    | □600                            |
| 12m                                      | □400 x 16hk    | Ø125                | 4                       | 300    | M24      | 1000       | 300                              | 340 x 100                   | 1800                                   | □500                    | □600                            |

Note :

1. Typical foundation drawing for standard soil condition.
2. Parameters considered in RCC foundation design :  
 Load bearing capacity of soil (LBC) : 10 Mt/m<sup>2</sup> (Minimum)  
 Basic wind speed : 50 m/s  
 Grade of steel reinforcement : Fe 415  
 Grade of foundation bolt : 4.6
3. Height of foundation above ground level (150mm) may be revised to suit the site conditions especially considering the expected water level stagnation.
4. Template supplied is suggested to be used for locating the CC of foundation bolts.
5. 4 Nos. of foundation bolt have to be oriented (located), while casting the foundation such that the door of the electrical junction box face the required direction.
6. PVC / GI pipe for entry of supply cable and the materials required for foundation are not scope of our supply.



Section: P - P



Steel reinforcements

PVC / GI pipe for supply cable entry with loop in / loop out arrangement

Foundation bolt

Horizontal level finished

| REV. No. | REVISION DETAILS             | DATE     | REVISED | CHD | APPD |
|----------|------------------------------|----------|---------|-----|------|
| 01.      | DESIGN REVISED               | 27-01-17 | SATHISH |     |      |
| 02.      | REVISED                      | 02-06-17 | SATHISH |     |      |
| 03.      | CABLE ENTRY HOLE FOR 6m & 7m | 03-02-18 | BASKAR  |     |      |

| DRAWN      | CHECKED | APPROVED | DATE     | SCALE  | MATERIAL |
|------------|---------|----------|----------|--------|----------|
| G.K.SUNDAR |         |          | 15-09-14 | 1 : 30 | -        |



**K-LITE INDUSTRIES**  
 CHENNAI - 600 098

DETAILED FOUNDATION DRAWING FOR KP - 53  
 SURFACE MOUNTED CONICAL POLE

Z:\KP005.FOUNDATION DETAIL S\KP - DFD - 07\REV 03.dwg



DRG. NO. KP-DFD-071

REV 03 SHEET 1 of 1