

DWG. No. : KP-DFD-016
SHEET No. : 1 of 1

ALL DIMENSIONS ARE IN mm

F

E

D

C

B

A

F

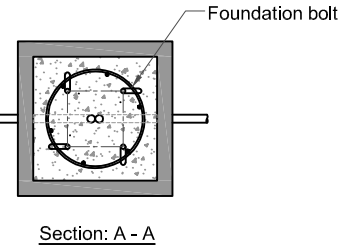
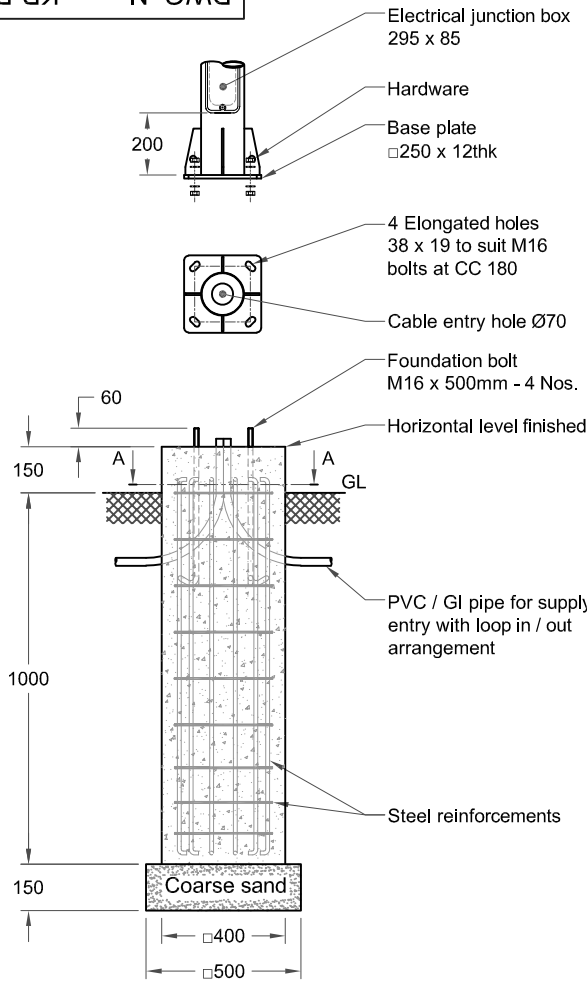
E

D

C

B

A



Note :

1. Typical foundation drawing for standard soil condition.
2. Parameters considered in RCC foundation design :
 - Load bearing capacity of soil (LBC) : 10 Mt/m² (Minimum)
 - Basic wind speed : 50 m/s
 - Grade of steel reinforcement : Fe 415
 - Grade of foundation bolt : 4.6
3. Height of foundation above ground level (150mm) may be revised to suit the site conditions especially considering the expected water level stagnation.
4. Template supplied is suggested to be used for locating the CC of foundation bolts.
5. 4 Nos. of foundation bolt have to be oriented (located), while casting the foundation such that the door of the electrical junction box faces the required direction.
6. PVC / GI pipe for entry of supply cable and the materials required for foundation are not scope of our supply.

| | | | | | |
|----------|---|----------|---------|-----|------|
| 03. | CABLE ENTRY HOLE REVISED | 03-02-18 | BASKAR | | |
| 02. | DESIGN REVISED | 24-01-17 | SATHISH | | |
| 01. | ELECTRICAL JUNCTION BOX DOOR SIZE REVISED | 18-03-16 | SELVA | | |
| REV. No. | REVISION DETAILS | DATE | REVISED | CHD | APPD |

| | | | | | |
|---------------------|---------|----------|------------------|-----------------|---------------|
| DRAWN THIRUPATHI | CHECKED | APPROVED | DATE 05-03-15 | SCALE 1 : 25 | MATERIAL - |
|---------------------|---------|----------|------------------|-----------------|---------------|

Z:\KP\005.FOUNDATION DETAILS\KP - DFD - 016\REV 03.dwg

K-LITE

K-LITE INDUSTRIES

CHENNAI - 600 058

DETAILED FOUNDATION DRAWING FOR KP - 29
□250 x 12 (FOUNDATION BOLT M16 x 500)

DRG. NO. **KP-DFD-016**

REV 03

SHEET 1 of 1