



客户承认书

SPECIFICATION FOR APPROVAL

CUSTOMER/客户: _____

CUSTOMER P.N./客户物料号: _____

PRODUCTMODEL./产品型号: _____ LFC-040B054 _____

PRODUCT NO./产品编号: _____

SAMPLE DATE/送样日期: _____ 2016-08-05 _____

CUSTOMER AUTHORIZED SIGNATURE/客户承认签核		

Please return to us one copy of "SPECIFICATION FOR APPROVAL" with you approved signature./客户确认签字，盖章后请回传一份承认书给我司。

ADD: Sangtai Industrial Park, Guanwai Xiaobaimang
Songbai Road, Nanshan District, Shenzhen, Guangdong 518108, P. R. China
地址:深圳市南山区西丽镇茂硕科技园

TEL: 0755-27657000 27657555 P.C.: 518108

FAX: 0755-27657908

E-mail: wcx@mosopower.com

<http://www.mosopower.com>

Prepared By: 拟 制:	Checked By: 审 核:	Approved By: 批 准:
----------------------	---------------------	----------------------



Revision History/变更履历表

Rev/版本.	Description of Change /变更内容描述		Changed Date/日期	Notes/备注.
	Before/变更前	After/变更后		
A/0	Original Release (初次发行)	---	2016-08-05	---

Table Of Content/目录

1	Scope/简述	4
2	Input Characteristics/输入特性	4
2.1	Input Voltage & Frequency/输入电压与频率	4
2.2	Input AC Current/输入交流电流	4
2.3	Inrush Current (cold start) /浪涌电流(冷启动)	4
2.4	Power Factor/功率因素	4
2.5	Efficiency/效率	4
2.6	THD	4
3	智能功能	4
4	Output Characteristics/输出特性	4
4.1	Static Output Characteristics <I _o & R&N<<+38%>/静态输出	4
4.2	Voltage/Current Curve/恒压/恒流控制曲线	4
4.3	Turn - on Delay Time/开机延迟时间	5
5	Protection Requirements/保护要求	5
5.1	Short Circuit Protection/短路保护	5
6	Environment Requirements/环境要求	5
6.1	Operating Temperature and Relative Humidity/操作温/相对湿度要求	5
6.2	Storage Temperature and Relative Humidity/存储温/相对湿度要求	5
6.3	Vibration/振动	5
7	Reliability Requirements/可靠性要求	5
7.1	Life Time Qualification/寿命时间估算	5
8	Safety & EMI/EMS Standards/安规及 EMI/EMS 标准	6
8.1	Safety Category/安规种类	6
8.2	EMI Standards/EMI 标准	6
8.3	EMS Standards/EMS 标准	6
9	Safety Standards/安规主要测试项目	6
9.1	Dielectric Strength(Hi-pot)/介电耐压强度(高压)	6
9.2	Grounded Resistance/接地电阻	7
9.3	Leakage Current/泄漏电流	7
9.4	Insulation Resistance/绝缘阻抗	7
10	Derating Curve/降额曲线	7
11	Mach. Outline Drawing/外观示意图	8

1 Scope/简述

The document detail the electrical, mechanical and environmental specifications of a 40W constant current LED driver.

The LED driver shall meet the RoHS requirement.

此份资料详细描述了一款 40W LED 恒流驱动电源的电气性能,结构性能及环境等要求.此款电源符合 RoHS 要求.

Description/描述:

- LED driver (With AL Case)/带铝壳型
- LED driver (With Plastic Case)/带胶壳型
- Open Frame/开放式结构
- Others/其他

2 Input Characteristics/输入特性

2.1 Input Voltage & Frequency/输入电压与频率

The range of input voltage is from 90 to 264Vac single phase/输入电压范围：单相从 90 到 264Vac.

Items/项目	Minimum/最小	Nominal/额定值	Maximum/最大
Input Voltage/输入电压	90Vac	100-240Vac	264Vac
Input Frequency/输入频率	47Hz	60Hz/50Hz	63Hz

2.2 Input AC Current/输入交流电流

0.75Amax. @ 90-264Vac input & full load.

2.3 Inrush Current (cold start) /浪涌电流(冷启动)

40Amax. @ 230Vac input, 25°C.

2.4 Power Factor/功率因素

Typical value is 0.97@100Vac input & full load /额定输入 100V& 负载;

Typical value is 0.94@230Vac input & full load /额定输入 230V& 负载.

2.5 Efficiency/效率

Typical value is 84% (Min.83%) @100Vac input & full load

在输入 100Vac 与满载时典型效率 84% (最低效率 83%);

Typical value is 85% (Min.84%) @230Vac input & full load

在输入 230Vac 与满载时典型效率 85% (最低效率 84%) .

2.6 THD

Typical THD @ 230Vac input & full load, THD < 20%

在输入 230Vac 输入, 满载时电流总谐波失真 THD 小于 20%

3 智能功能

无

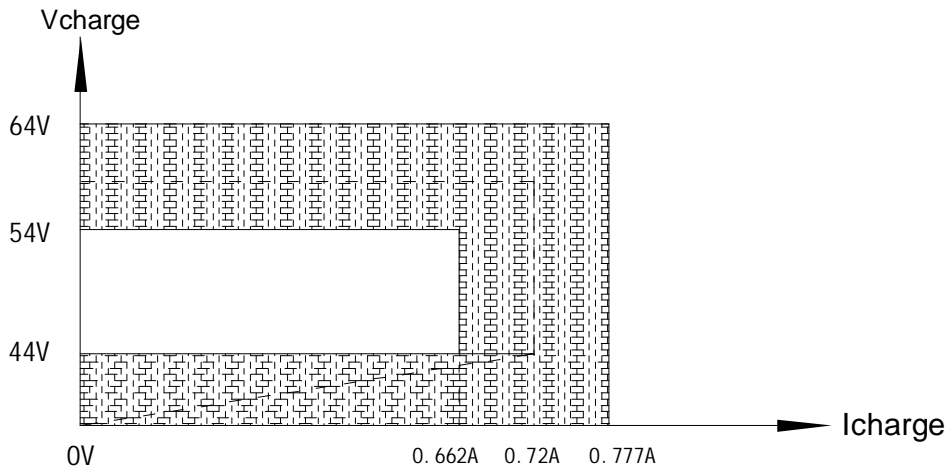
4 Output Characteristics/输出特性

4.1 Static Output Characteristics <Io & R&N<<+-38%>/静态输出

Ripple & Noise: Measurement is done by output current.

纹波&噪声: 测试输出电流.

4.2 Voltage/Current Curve/恒压/恒流控制曲线



Constant Current Output Characteristics /恒流输出特性	Min. / 最小值	Typ. / 典型值	Max. / 最大值
Output Current Range/输出电流范围	0.662 A	0.72 A	0.777 A
Output Voltage Range/输出电压范围	44V	/	54V

4.3 Turn - on Delay Time/开机延迟时间

3.0S max. @ 100-240Vac input & full load.

5 Protection Requirements/保护要求

5.1 Short Circuit Protection/短路保护

The input power shall be less than 17w and without any damage when output is short, it will auto-recovery work once the fault conditions removed.

当输出短路时,产品输入功率降低至17W以下且不会有任何损坏,一旦短路情况解除,产品将会自动恢复工作。

6 Environment Requirements/环境要求

6.1 Operating Temperature and Relative Humidity/操作温/相对湿度要求

-40°C to +50°C

20%RH to 95%RH

6.2 Storage Temperature and Relative Humidity/存储温/相对湿度要求

-40°C to +70°C

10% to 95%RH non-condensing at Sea level shall be low 10,000 feet/低于 10,000 英尺.

6.3 Vibration/振动

10 to 300Hz sweep at a constant acceleration of 1.0G(Breadth: 3.5mm) for 1Hour for each of the perpendicular axes X, Y, Z.

扫描频率: 10 to 300Hz,加速度:1.0G(位移: 3.5mm),X,Y,Z 三垂直坐标轴向各振动 1 小时.

7 Reliability Requirements/可靠性要求

7.1 Life Time Qualification/寿命时间估算

The Life Time shall be at least 5 years at 45°C, Full load and nominal input condition

寿命时间:在 45°C 环境及额定输入与满载条件下, 至少 5 年.

8 Safety & EMI/EMS Standards/安规及 EMI/EMS 标准

8.1 Safety Category/安规种类

Safety Category	Country	Standard
CCC	China	GB19510.1
		GB19510.14
CE	Europe	EN61347-1
		EN61347-2-13
CB	CB member	IEC61347-1
		IEC61347-2-13

8.2 EMI Standards/EMI 标准

EMI Standards	Country	Notes
CCC	China	GB 17743
		GB 17625.1
CE	Europe	EN 55015 CLASSB(input 230Vac)
		IEC 61000-3-2
		IEC 61000-3-3
		IEC 61547

8.3 EMS Standards/EMS 标准

EN 61000-3-2	Harmonic current emissions
EN 61000-3-3	Voltage fluctuations & flicker
EN 61000-4-2	Electrostatic Discharge(ESD): 8kV air discharge, 4kV contact discharge
EN 61000-4-3	Radio-Frequency Electromagnetic Field Susceptibility Test-RS
EN 61000-4-4	Electrical Fast Transient / Burst-EFT
EN 61000-4-5	Surge Immunity Test: AC Power Line: line to line 5 kV, line to earth 10 kV
EN 61000-4-6	Conducted Radio Frequency Disturbances Test-CS
EN 61000-4-8	Power Frequency Magnetic Field Test
EN 61000-4-11	Voltage Dips
EN 61547	Electromagnetic Immunity Requirements Applies To Lighting Equipment

9 Safety Standards/安规主要测试项目

9.1 Dielectric Strength(Hi-pot)/介电耐压强度(高压)

Primary to Secondary: 3750Vac 10mAMax / 60second(3second for production)/ Finished goods

初级对次级: 3750Vac /10mAMax / 60 秒(生产时高压测试时间: 3 秒) <成品>

Primary to Earth: 1500Vac 10mAMax / 60second(3second for production)

初级对地: 1500Vac /10mAMax / 60 秒(生产时高压测试时间: 3 秒)

Secondary to Earth: 500Vac 10mAMax / 60second(3second for production)

次级对地: 500Vac /10mAMax / 60 秒(生产时高压测试时间: 3 秒)

9.2 Grounded Resistance/接地电阻

< 0.1Ω, 25A, 1Minute

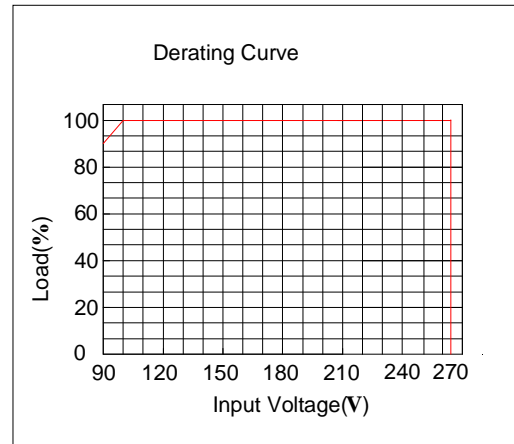
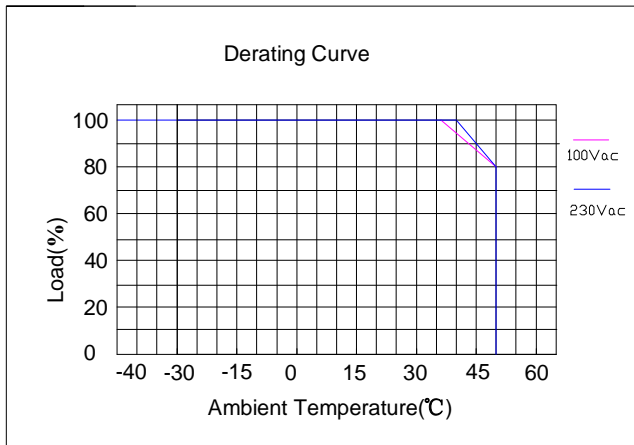
9.3 Leakage Current/泄漏电流

0.75mAmax. at input 120Vac/50Hz.

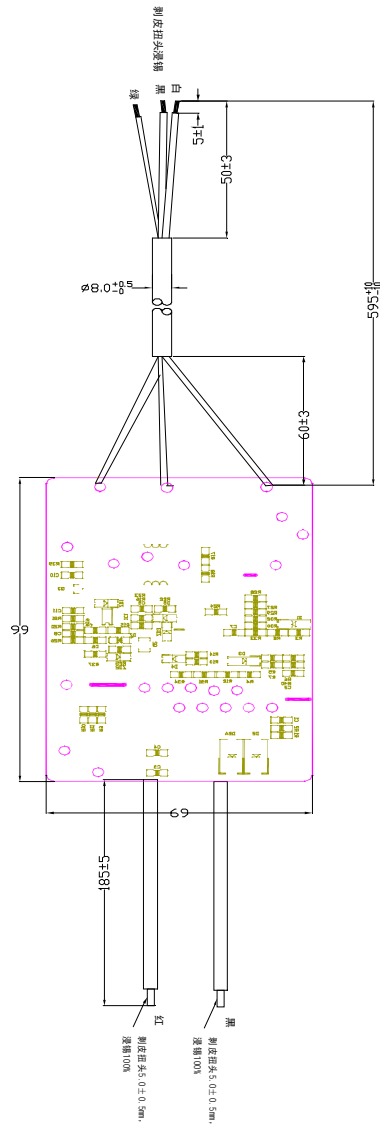
9.4 Insulation Resistance/绝缘阻抗

The IR shall be at least 50MΩ when apply 500Vdc between primary and Earth.

在初级与地间加 500Vdc 进行绝缘测试，最小绝缘阻抗 50MΩ.

10 Derating Curve/降额曲线

11 Mach. Outline Drawing/外观示意图



- 公差: 未标识公差统一±0.5的公差, 标识的以标识公差为准
/ Tolerance: ±0.5mm for unidentified part, identified refer to the fact
- Unit/单位: mm

Dimensions/尺寸	Millimeters(Inches) /毫米 (英寸)
Length/长	99(3.90)
Width/宽	69(2.72)
Height/高	24.6(0.97)

Wire/线	Specification/规格
AC Input/输入	3*1.0mm ² CCC+VDE 橡胶线
DC Output/输出	Red、black UL 18#
Dimming/调光	/