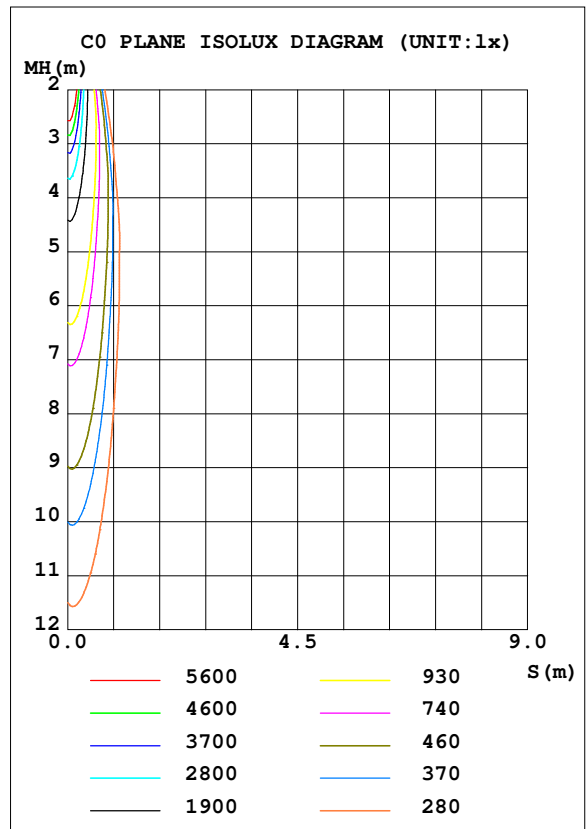
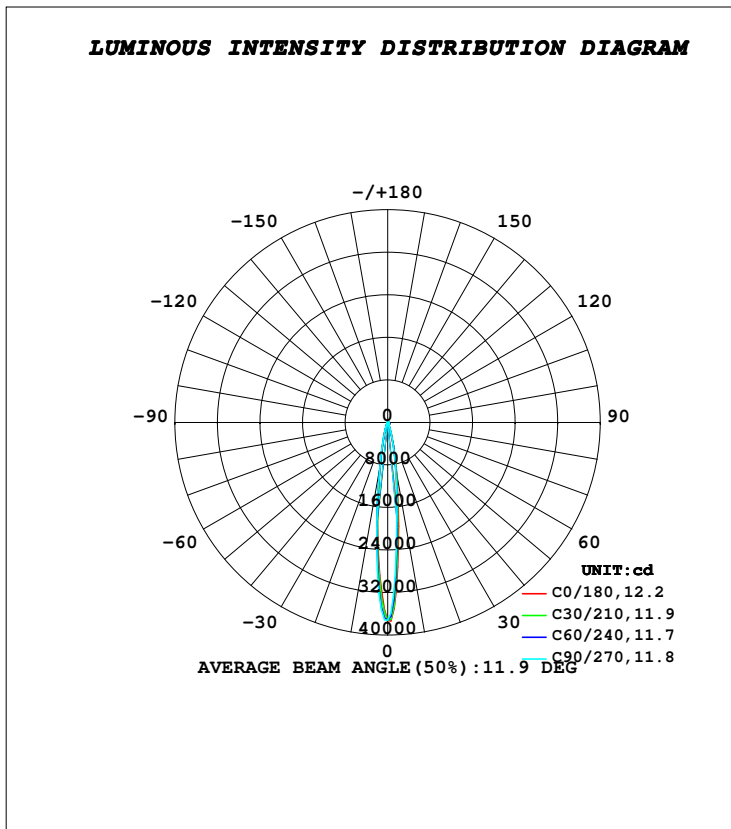


LUMINAIRE PHOTOMETRIC TEST REPORT

Test:U:230.50V I:0.1271A P:28.778W PF:0.9824 Freq:49.99Hz Lamp Flux:4723.86x1 lm		
NAME: 50W LED MODULE - ROUND	TYPE:FLOOD LIGHTS	WEIGHT:0.985kg
SPEC.:2700K, NICHIA, BA-10°, 80 CRI	DIM.: Ø140 x 69	SERIAL No.:INT/2024/04/36A
MFR.: K-LITE	SUR.:	Shielding Angle:

DATA OF LAMP		PHOTOMETRIC DATA				Eff: 123.59 lm/W
MODEL	KL-8534*	I _{max} (cd)	37467	S/MH (C0/180)	0.21	
NOMINAL POWER (W)	30	LOR (%)	75.3	S/MH (C90/270)	0.22	
RATED VOLTAGE (V)	230	TOTAL FLUX (lm)	3556.7	η UP, DN (C0-180)	0.2, 37.0	
NOMINAL FLUX (lm)	4723.86	CIE CLASS	DIRECT	η UP, DN (C180-360)	0.2, 37.9	
LAMPS INSIDE	1	η up (%)	0.4	CIBSE SHR NOM	0.00	
TEST VOLTAGE (V)	230	η down (%)	74.9	CIBSE SHR MAX	1.00	



C Range: 0 - 360DEG
C Interval: 10.0DEG
Test Speed: HIGH
Temperature: 25.3DEG
Operators: K-LITE
Test Date: 26 April 2024

γ Range: 0 - 180DEG
γ Interval: 1.0DEG
Test System: EVERFINE GO-R5000_V2 SYSTEM V2.00.417
Humidity: 48.1%
Test Distance: 1.997m [K=1.0000]
Remarks:

APPLICABLE IDs: KL-4286, 4287

*** - 30W**