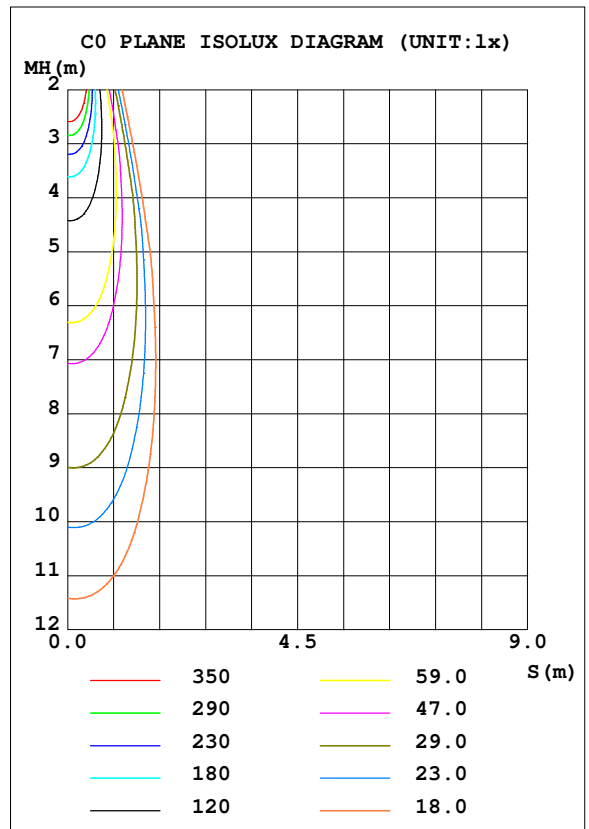
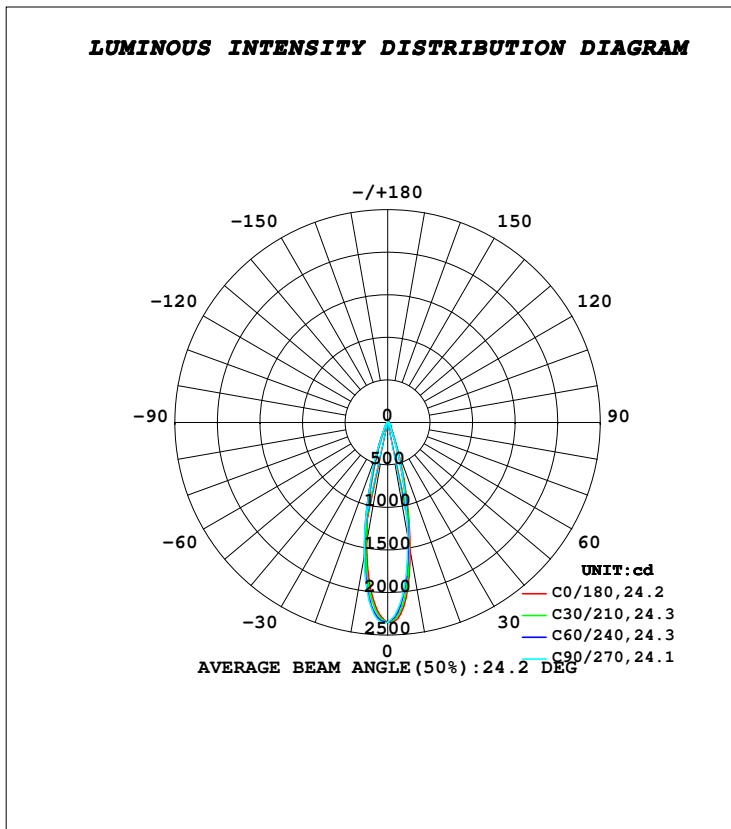


**LUMINAIRE PHOTOMETRIC TEST REPORT**

Test:U:230.23V I:0.0262A P:5.9438W PF:0.9860 Freq:49.99Hz Lamp Flux:726.015x1 lm		
NAME: NEBULA MINI - BRACKET	TYPE:FLOOD LIGHTS	WEIGHT:0.350Kg
SPEC.:5700K, LUMILED, CRI 70, BA-25°	DIM.: 101 x 64 x 93	SERIAL No.:INT/2024/05/85B
MFR.: K-LITE	SUR.:	Shielding Angle:

DATA OF LAMP		PHOTOMETRIC DATA			
MODEL	KL-4266	Imax (cd)	2362	S/MH (C0/180)	0.40
NOMINAL POWER (W)	6	LOR (%)	72.0	S/MH (C90/270)	0.42
RATED VOLTAGE (V)	230	TOTAL FLUX (lm)	522.58	η UP, DN (C0-180)	0.0, 34.2
NOMINAL FLUX (lm)	726.015	CIE CLASS	DIRECT	η UP, DN (C180-360)	0.0, 37.8
LAMPS INSIDE	1	η up (%)	0.0	CIBSE SHR NOM	0.00
TEST VOLTAGE (V)	230	η down (%)	72.0	CIBSE SHR MAX	1.00



**C Range: 0 - 360DEG**  
**C Interval: 10.0DEG**  
**Test Speed: HIGH**  
**Temperature: 25.8DEG**  
**Operators: K-LITE**  
**Test Date: 20 August 2024**

**γ Range: 0 - 90DEG**  
**γ Interval: 1.0DEG**  
**Test System: EVERFINE GO-R5000\_V2 SYSTEM V2.00.417**  
**Humidity: 42.9%**  
**Test Distance: 2.001m [K=1.0000]**  
**Remarks:**  
**APPLICABLE ID : KL-4265**