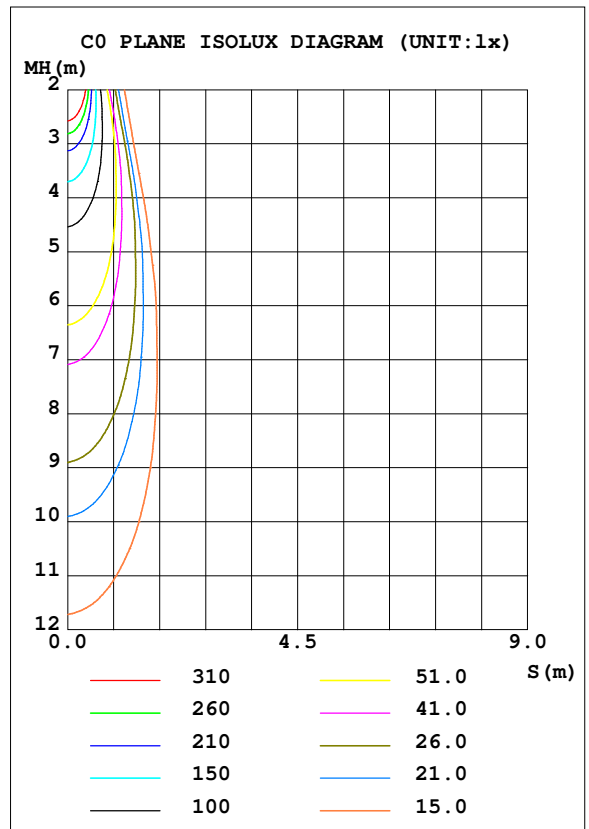
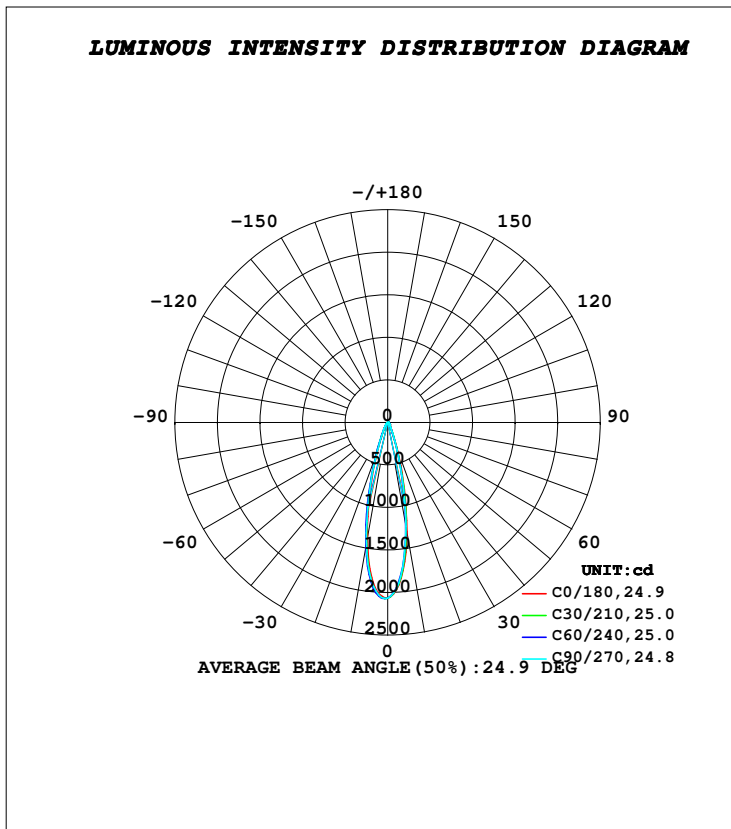


**LUMINAIRE PHOTOMETRIC TEST REPORT**

Test:U:230.43V I:0.0268A P:6.0930W PF:0.9870 Freq:49.99Hz Lamp Flux:708.18x1 lm		
NAME: NEBULA MINI - BRACKET	TYPE:FLOOD LIGHTS	WEIGHT:0.350Kg
SPEC.:3000K, LUMILED, CRI 70, BA-25°	DIM.: 101 x 64 x 93	SERIAL No.:INT/2024/05/83B
MFR.: K-LITE	SUR.:	Shielding Angle:

DATA OF LAMP		PHOTOMETRIC DATA				Eff: 82.42 lm/W
MODEL	KL-4266	I <sub>max</sub> (cd)	2072	S/MH (C0/180)	0.43	
NOMINAL POWER (W)	6	LOR (%)	70.9	S/MH (C90/270)	0.44	
RATED VOLTAGE (V)	230	TOTAL FLUX (lm)	502.19	η UP, DN (C0-180)	0.0, 33.5	
NOMINAL FLUX (lm)	708.18	CIE CLASS	DIRECT	η UP, DN (C180-360)	0.0, 37.4	
LAMPS INSIDE	1	η up (%)	0.0	CIBSE SHR NOM	0.00	
TEST VOLTAGE (V)	230	η down (%)	70.9	CIBSE SHR MAX	1.00	



**C Range: 0 - 360DEG**  
**C Interval: 10.0DEG**  
**Test Speed: HIGH**  
**Temperature: 25.4DEG**  
**Operators: K-LITE**  
**Test Date: 19 August 2024**

**γ Range: 0 - 90DEG**  
**γ Interval: 1.0DEG**  
**Test System: EVERFINE GO-R5000\_V2 SYSTEM V2.00.417**  
**Humidity: 36.3%**  
**Test Distance: 2.001m [K=1.0000]**  
**Remarks:**  
**APPLICABLE ID : KL-4265**