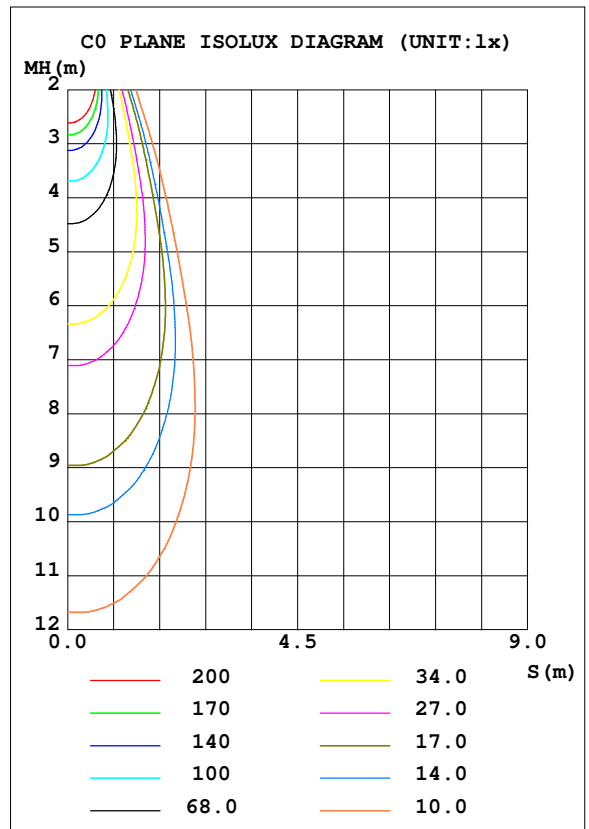
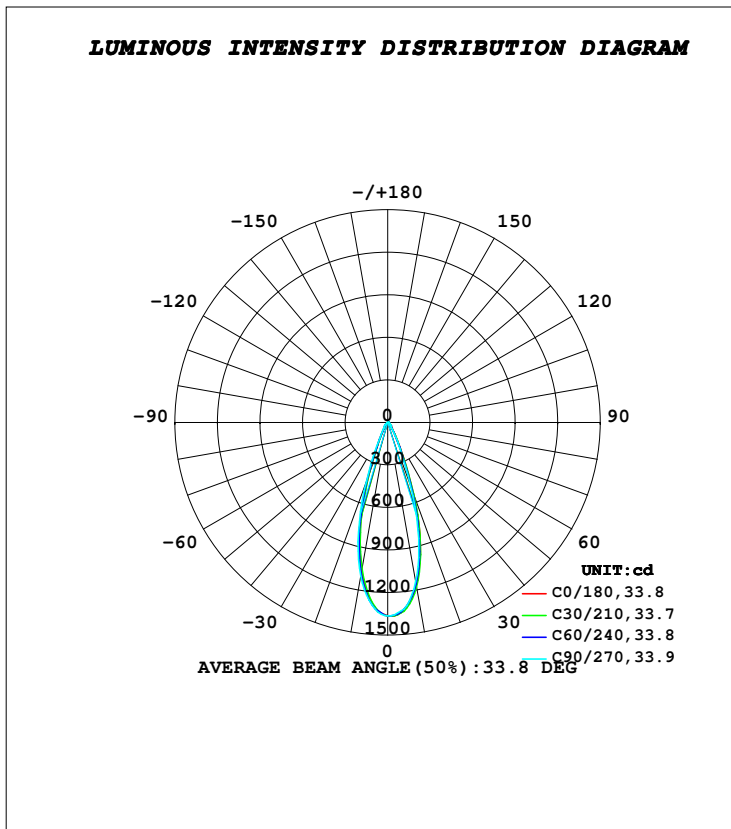


LUMINAIRE PHOTOMETRIC TEST REPORT

Test:U:230.49V I:0.0263A P:5.9779W PF:0.9863 Freq:49.99Hz Lamp Flux:726.015x1 lm		
NAME: NEBULA MINI - BRACKET	TYPE:FLOOD LIGHTS	WEIGHT:0.350 kg
SPEC.:5700K, LUMILED, CRI 70, BA - 40°	DIM.: 101 x 64 x 93	SERIAL No.:INT/2024/05/85C
MFR.: K-LITE	SUR.:	Shielding Angle:

DATA OF LAMP		PHOTOMETRIC DATA				Eff: 82.96 lm/W
MODEL	KL-4266	Imax (cd)	1366	S/MH (C0/180)	0.51	
NOMINAL POWER (W)	6	LOR (%)	68.3	S/MH (C90/270)	0.53	
RATED VOLTAGE (V)	230	TOTAL FLUX (lm)	495.95	η UP, DN (C0-180)	0.0, 35.1	
NOMINAL FLUX (lm)	726.015	CIE CLASS	DIRECT	η UP, DN (C180-360)	0.0, 33.2	
LAMPS INSIDE	1	η up (%)	0.0	CIBSE SHR NOM	0.50	
TEST VOLTAGE (V)	230	η down (%)	68.3	CIBSE SHR MAX	0.55	



C Range: 0 - 360DEG
C Interval: 10.0DEG
Test Speed: HIGH
Temperature: 25.1DEG
Operators: K-LITE
Test Date: 11 June 2024

γ Range: 0 - 90DEG
γ Interval: 1.0DEG
Test System: EVERFINE GO-R5000_V2 SYSTEM V2.00.417
Humidity: 35.9%
Test Distance: 1.997m [K=1.0000]
Remarks:

APPLICABLE ID : KL-4265